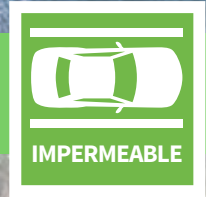




# RonaDeck

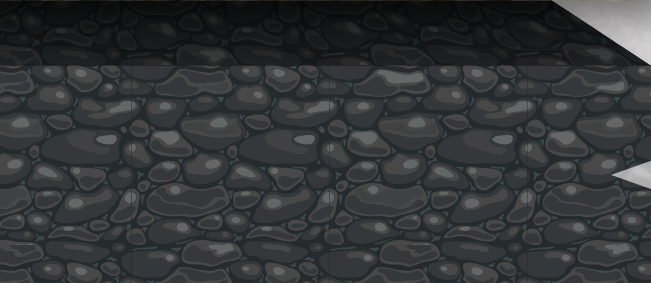
## Resin Bound Surfacing

**CAR PARKS** - Impermeable



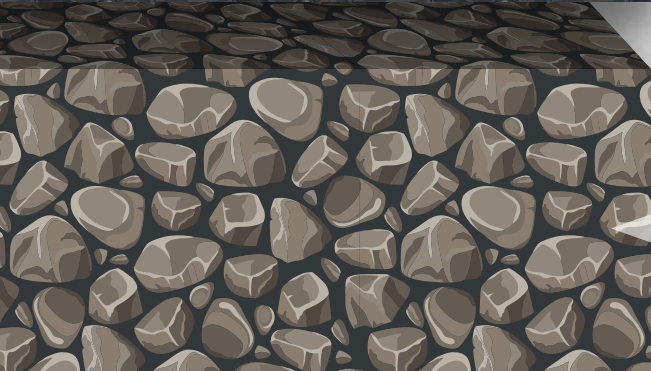
### RESIN BOUND SURFACING

RonaDeck Resin Bound Surfacing minimum **20mm** thickness with optional RonaDeck Resin Bound Surfacing Anti-Slip Aggregate.



### BINDER COURSE

**100mm** minimum depth of AC14 dense asphalt concrete (macadam) maximum 70/100 pen binder to BS EN 13108-1.

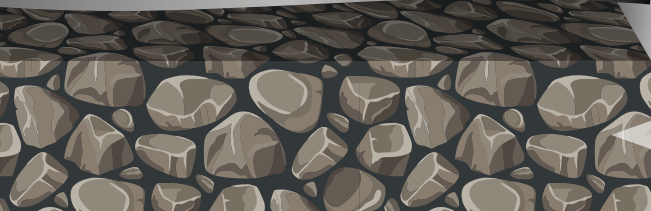


### GRANULAR SUB-BASE

**200mm** minimum well compacted Type 1 granular sub-base or similar approved.

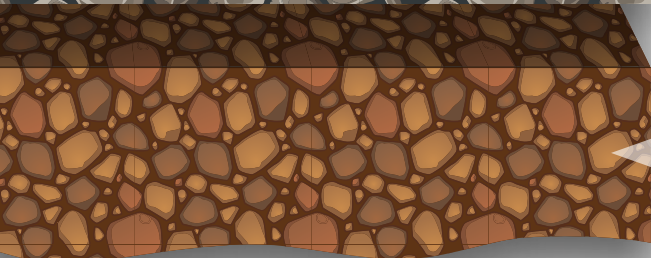


### GEOTEXTILE MEMBRANE



### CAPPING LAYER

If required, depending on sub-grade condition



### SUB-GRADE