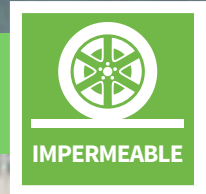




RonaDeck

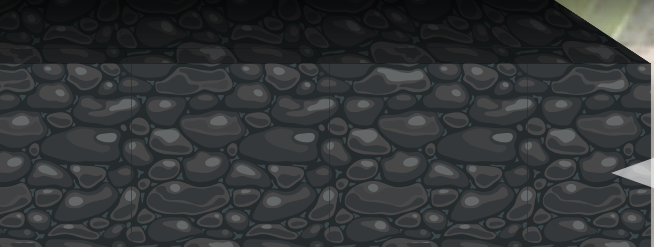
Resin Bound Surfacing

DRIVEWAYS - Impermeable



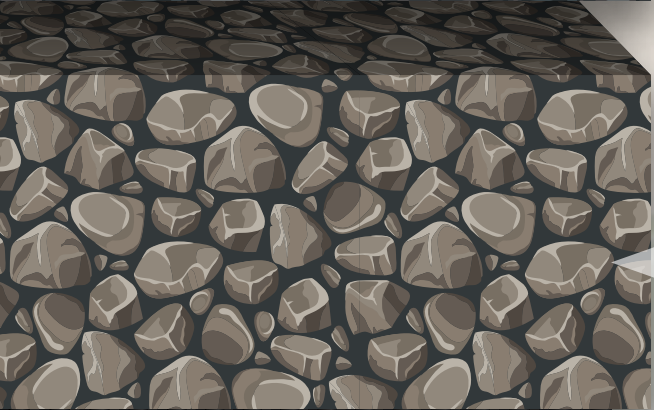
RESIN BOUND SURFACING

RonaDeck Resin Bound Surfacing minimum **18mm** thickness with optional RonaDeck Resin Bound Surfacing Anti-Slip Aggregate.



BINDER COURSE

70mm minimum depth of AC14 dense asphalt concrete (macadam) maximum 100/150 pen binder to BS EN 13108-1.

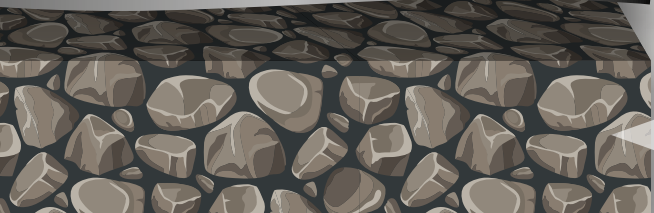


GRANULAR SUB-BASE

150mm minimum well compacted Type 1 granular sub-base or similar approved.

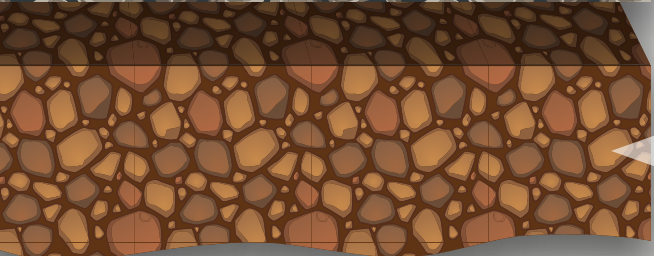


GEOTEXTILE MEMBRANE



CAPPING LAYER

If required, depending on sub-grade condition.



SUB-GRADE